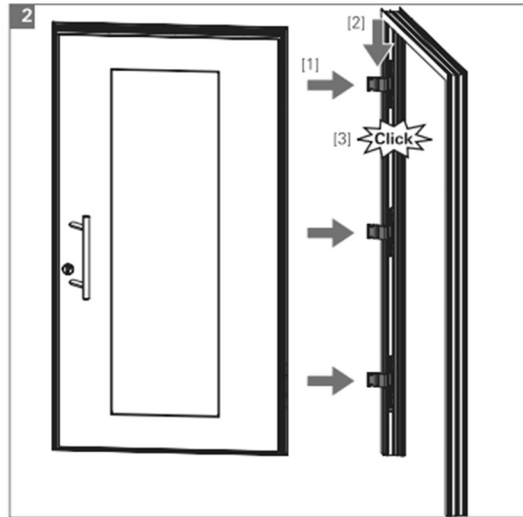
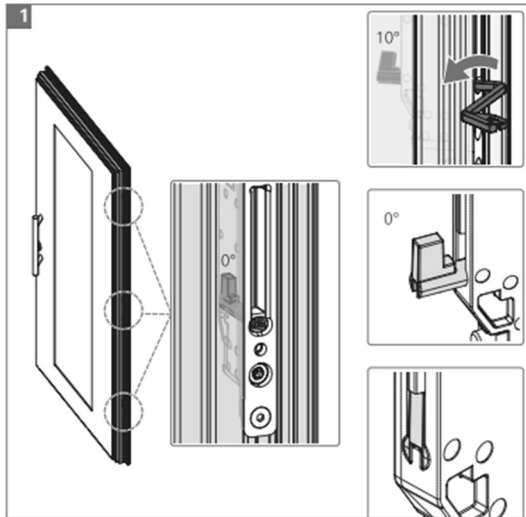
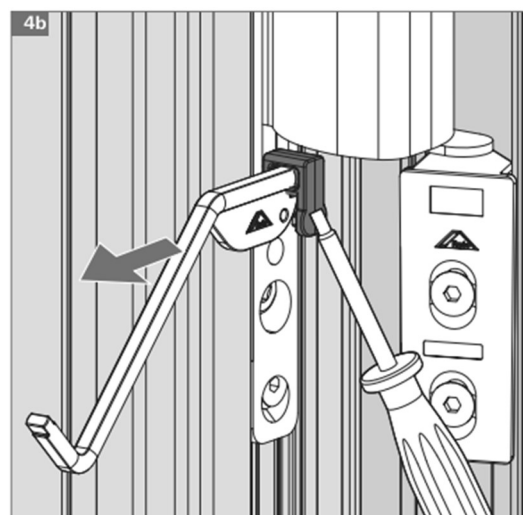
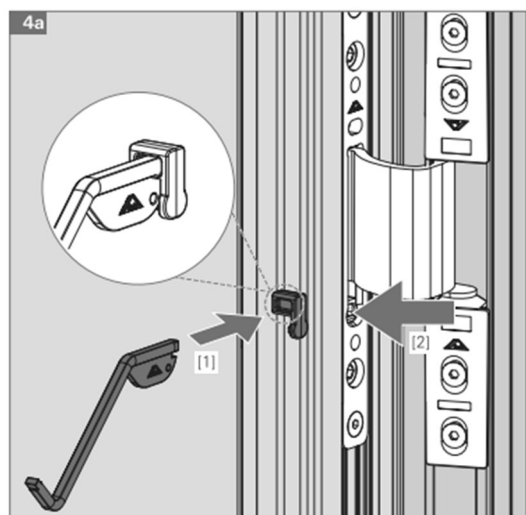
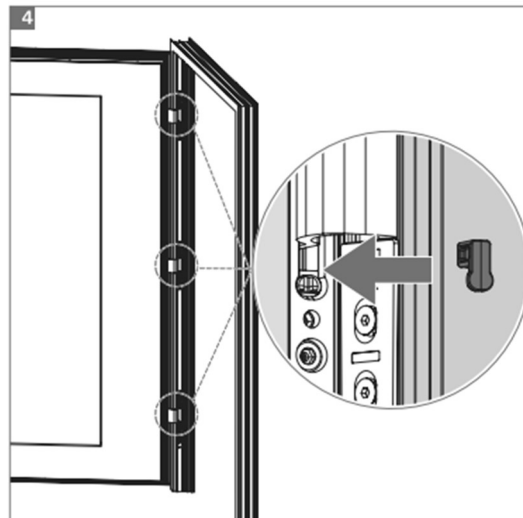
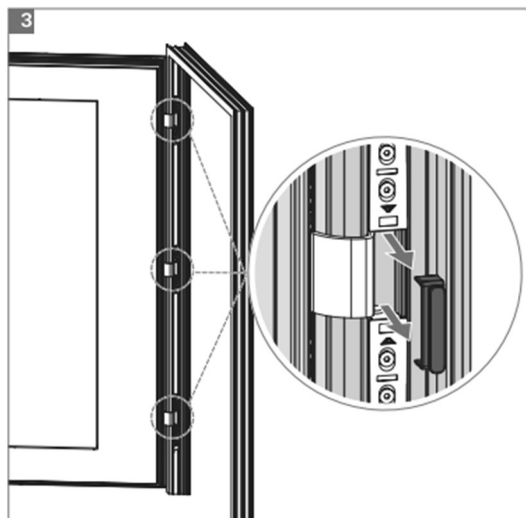


# Einstellanleitung Verdeckt liegende Bänder

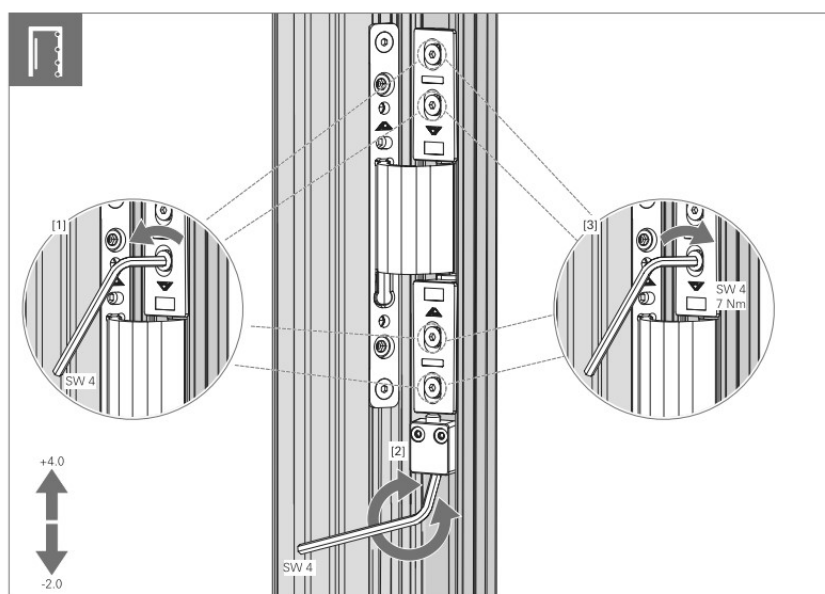
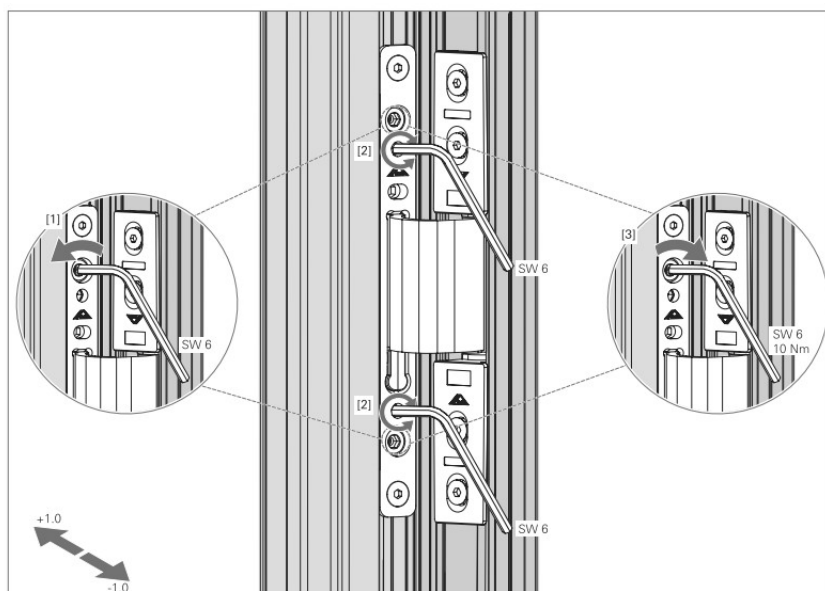
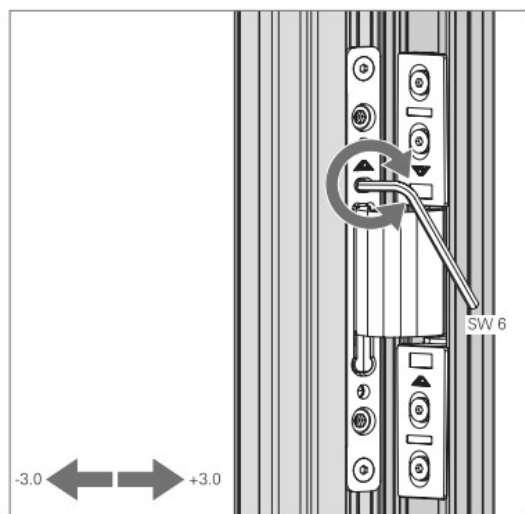
Türenwerk



**INFO:** Türstopper oder Drehbegrenzer verwenden, sonst Kollision zwischen Flügel und Rahmen (Öffnungswinkel profilabhängig)



**INFO: Wenn nötig Tür vor Justierung entlasten!**



# Demontage

**INFO:** Wenn nötig Tür vor Demontage entlasten!

